

# Thousand Oaks

## Introduction to Districting

May 16, 2023

# Districting Outreach Efforts

- ❑ **Email and/or phone contact** with nearly 50 community leaders and organizations
- ❑ Rollout of the **districting website**, MapTOaks.org
- ❑ Animated **Explainer Video** in English and Spanish
- ❑ Distributed an online **Communities of Interest Survey** to develop a list of neighborhoods and “communities of interest”
- ❑ Four **community workshops** (2 in-person, 2 virtual)
  - ❑ First virtual workshop was on May 11
- ❑ Extensive **social media** engagement, including posts, stories and event reminders across all platforms
  - ❑ English and Spanish
- ❑ Five planned **flyers** in English and Spanish to promote upcoming community meetings (2 published so far)
- ❑ Five **press releases** distributed to the City’s media contacts (1 distributed so far)

# Election Systems

---

1. “At Large”
2. “From District” or “Residence” Districts
3. “By District”

The California Voting Rights Act was written to specifically encourage by-district elections.



# California Voting Rights Act (CVRA)

---

- ❑ Under the Federal Voting Rights Act (passed in 1965), a jurisdiction must fail 4 factual tests before it is in violation of the law.
- ❑ The California VRA makes it significantly easier for plaintiffs to force jurisdictions into “by-district” election systems by arguably eliminating two of the US Supreme Court Gingles tests:
  - ~~❑ Can the protected class constitute the majority of a district?~~
  - ❑ Does the protected class vote as a bloc?
  - ❑ Do the voters who are not in the protected class vote in a bloc to defeat the preferred candidates of the protected class?
  - ~~❑ Do the “totality of circumstances” indicate race is a factor in elections?~~
- ❑ Liability is now arguably determined only by the presence of racially polarized voting

# CVRA Impact

---

## ❑ Switched (or in the process of switching) as a result of CVRA:

- ❑ At least 275 school districts
- ❑ 36 Community College Districts
- ❑ 185 cities
- ❑ 1 County Board of Supervisors
- ❑ 53 water and other special districts.

## ❑ Cases So Far:

- ❑ Palmdale, Santa Clara and Santa Monica went to trial on the merits. Palmdale and Santa Clara lost. Santa Monica is awaiting a decision.
- ❑ Modesto and Palmdale each spent about \$1.8 million on their defense (in addition to the attorney fee awards in those cases).
- ❑ Santa Monica has spent an estimated \$7 million so far. Plaintiffs in Santa Monica requested \$22 million in legal fees after the original trial.

## ❑ Key settlements:

- ❑ Palmdale: \$4.7 million
- ❑ Modesto: \$3 million
- ❑ Highland: \$1.3 million
- ❑ Anaheim: \$1.1 million
- ❑ Whittier: \$1 million
- ❑ Santa Barbara: \$600,000
- ❑ Palm Desert: \$555,000
- ❑ Tulare Hospital: \$500,000
- ❑ Camarillo: \$233,000
- ❑ Compton Unified: \$200,000
- ❑ Madera Unified: about \$170,000
- ❑ Hanford Joint Union Schools: \$118,000
- ❑ Merced City: \$42,000

## ❑ An estimated \$18 million in total settlements and court awards so far.

# Districting Process

---

Step	Description
<b>Two Initial Hearings</b> May 9 & May 16	Held prior to release of draft maps. Education and to solicit input on the composition of districts.
<b>Release draft maps</b>	Maps must be posted at least 7 days prior to 3 <sup>rd</sup> hearing.
<b>Two hearings on draft maps</b> June 20 & July 11	Two meetings to discuss and revise the draft maps and to discuss the election sequence.
<b>Map adoption</b> July 18	Map adopted via ordinance. Final map must be posted at least 7 days prior to adoption.

# Districting Rules and Goals

## 1. Federal Laws

**Equal Population**  
**Federal Voting Rights Act**  
**No Racial Gerrymandering**



## 2. California Criteria for Cities

1. **Geographically contiguous**
2. **Undivided neighborhoods and “communities of interest”**  
(Socio-economic geographic areas that should be kept together)
3. **Easily identifiable boundaries**
4. **Compact**  
(Do not bypass one group of people to get to a more distant group of people)

### **Prohibited:**

“Shall not favor or discriminate against a political party.”

## 3. Other Traditional Districting Principles

**Respect voters’ choices / continuity in office**  
**Future population growth**

# Demographic Summary

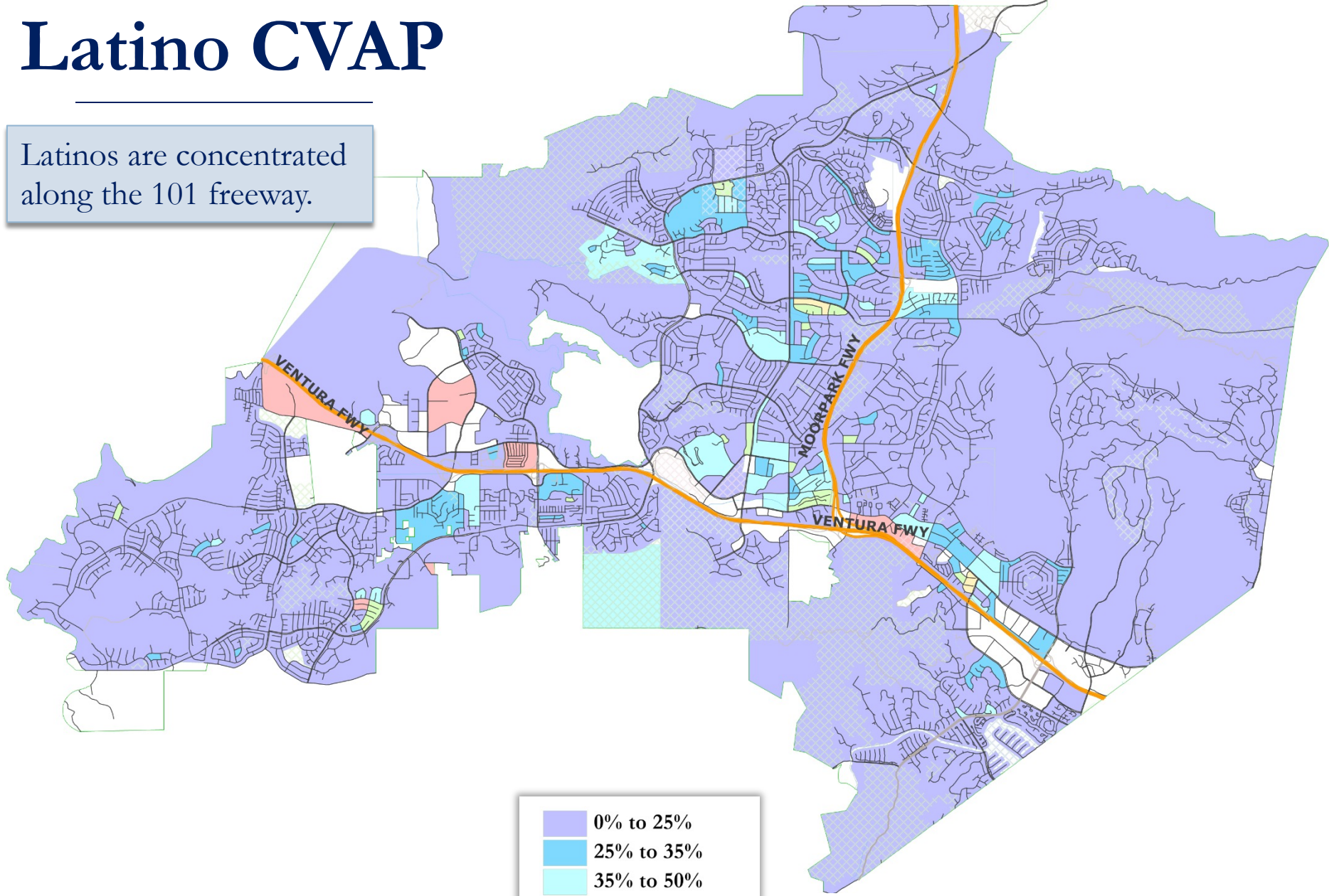
Each of the five districts must contain about 25,427 people.

Category	Field	Total	Category	Field	Total
2020 Census	Total Population	127,134	Age	age0-19	24%
Total Pop.	Hispanic/Latino	20%		age20-60	50%
	NH White	63%		age60plus	26%
	NH Black	2%	Immigration	immigrants	18%
	NH Asian/Pac.Isl.	14%		naturalized	60%
	NH Native Amer.	1%	Language spoken at home	english	77%
Citizen Voting Age Pop	Total	91,642		spanish	13%
	Hisp	15%		asian-lang	5%
	NH White	73%		other lang	5%
	NH Black	2%	Language Fluency	Speaks Eng. "Less than Very Well"	8%
	Asian/Pac.Isl.	9%		hs-grad	45%
	Native Amer.	1%	Education (among those age 25+)	bachelor	29%
Voter Registration (Nov 2020)	Total	85,938		graduatedegree	20%
	Latino est.	11%	Child in Household	child-under18	28%
	Spanish-Surnamed	10%	Pct of Pop. Age 16+	employed	63%
	Asian-Surnamed	6%	Household Income	income 0-25k	10%
	Filipino-Surnamed	1%		income 25-50k	11%
	NH White est.	82%		income 50-75k	12%
Voter Turnout (Nov 2020)	NH Black	1%		income 75-200k	41%
	Total	76,781		income 200k-plus	25%
	Latino est.	10%	Housing Stats	single family	82%
	Spanish-Surnamed	9%		multi-family	18%
	Asian-Surnamed	5%		rented	31%
	Filipino-Surnamed	1%		owned	69%
Voter Turnout (Nov 2018)	NH White est.	82%	Total population data from California's adjusted 2020 Census data. Citizen Voting Age Population, Age, Immigration, and other demographics from the 2017-2021 American Community Survey and Special Tabulation 5-year data. Turnout and Registration data from California Statewide Database. "Latino" figures calculated by NDC using Census Bureau's Latino undercount by surname estimate.		
	NH Black	1%			
	Total	58,110			
	Latino est.	8%			
	Spanish-Surnamed	8%			
	Asian-Surnamed	4%			
	Filipino-Surnamed	1%			
	NH White est.	85%			
	NH Black est.	1%			

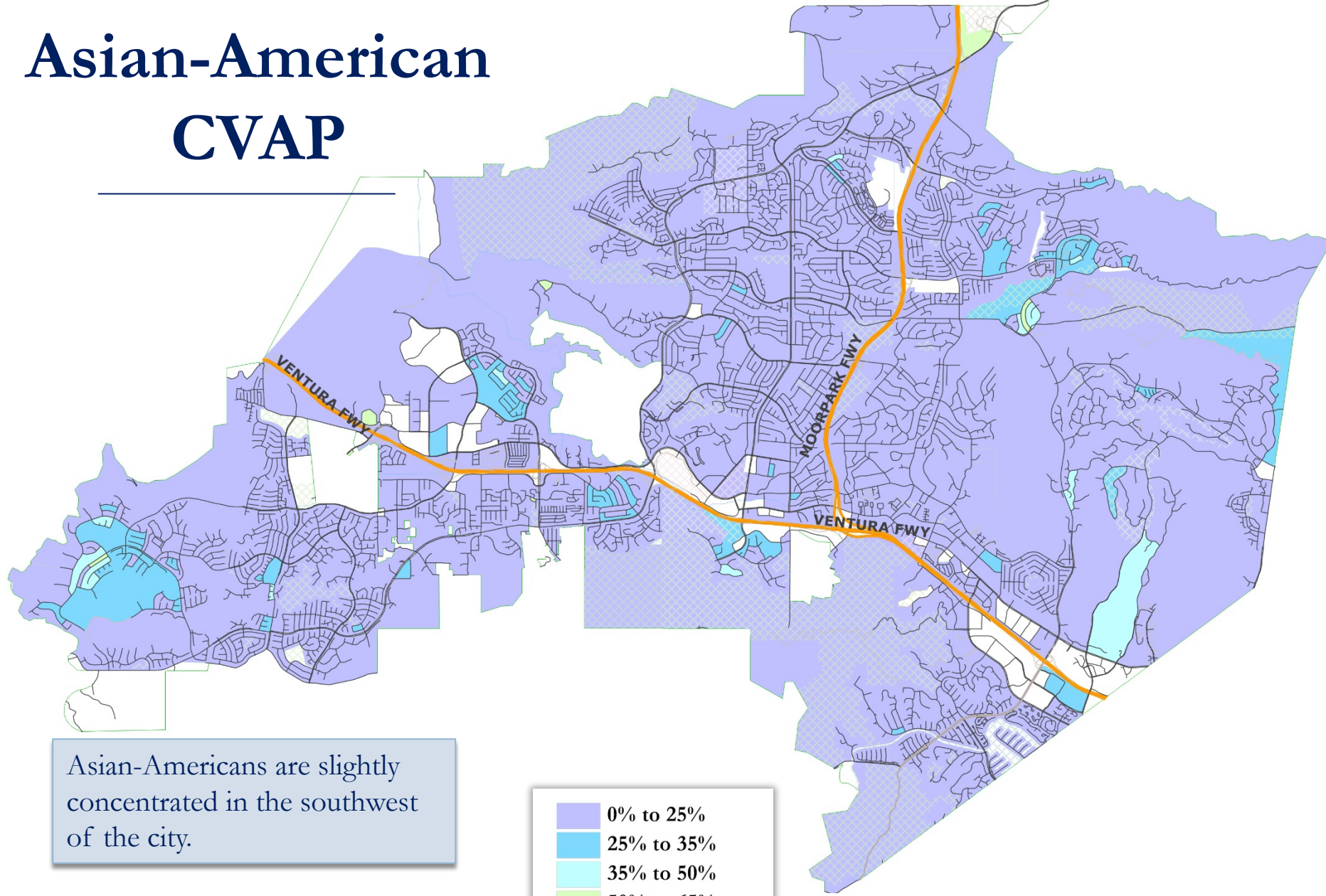


# Latino CVAP

Latinos are concentrated along the 101 freeway.



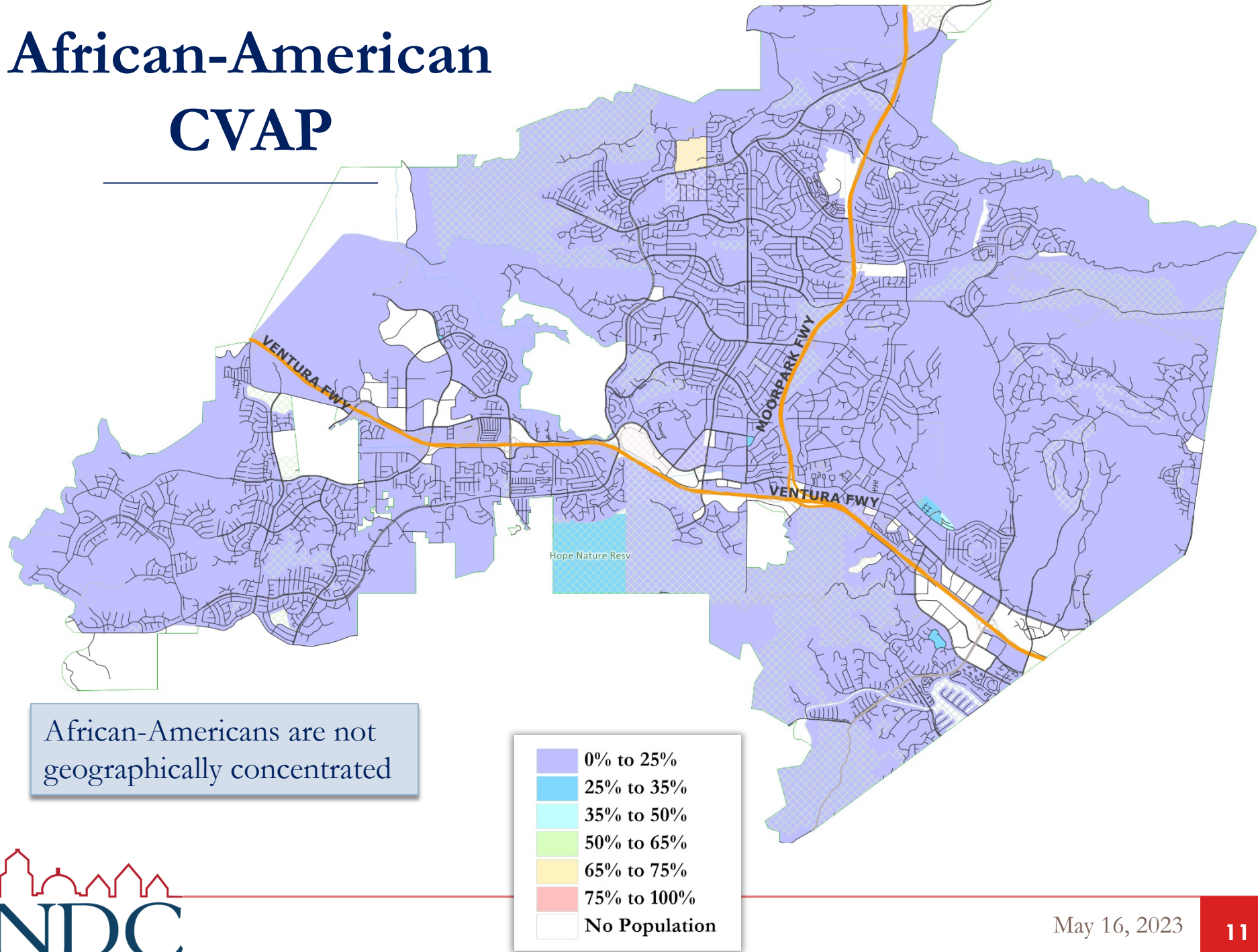
# Asian-American CVAP



Asian-Americans are slightly concentrated in the southwest of the city.

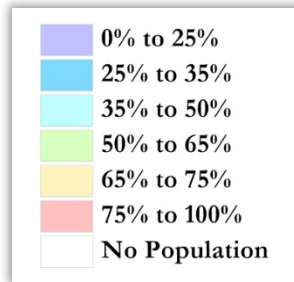


# African-American CVAP

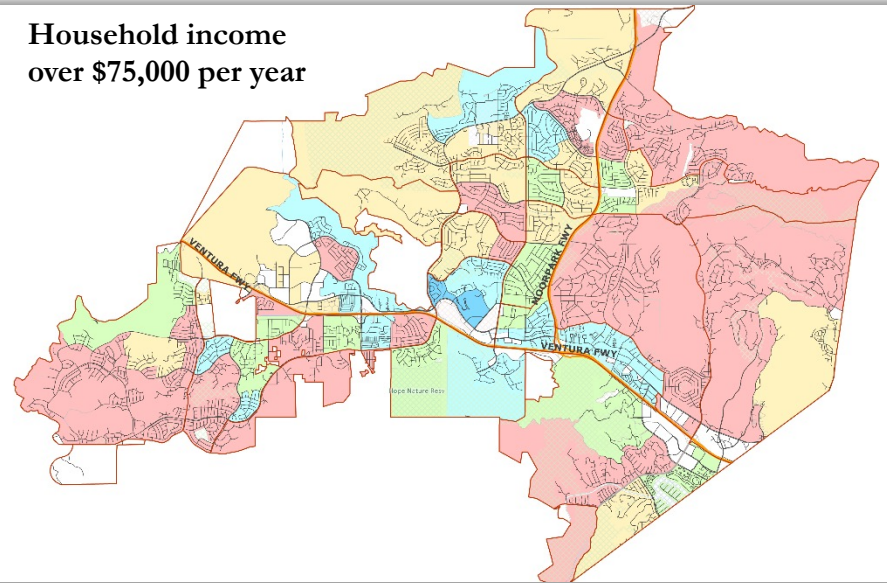


African-Americans are not  
geographically concentrated

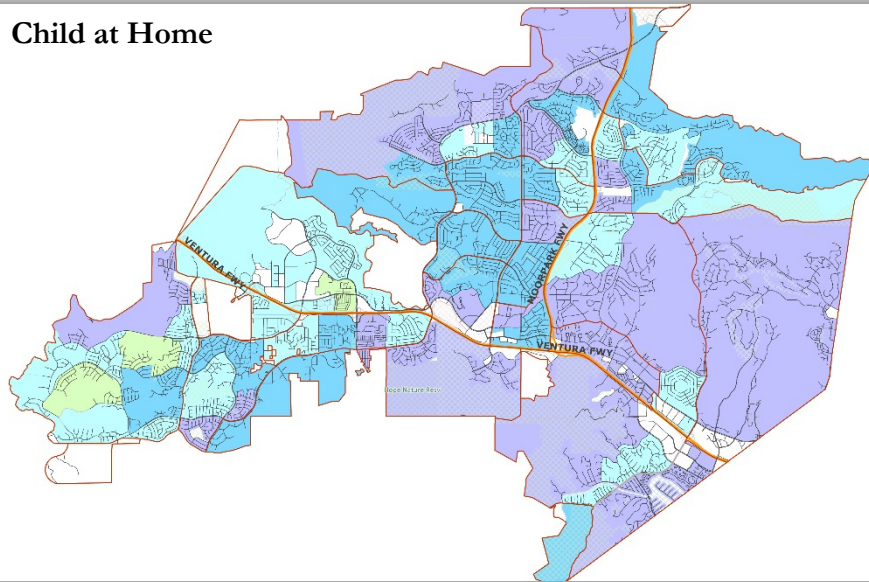
# Other Socio-Economic Demographics



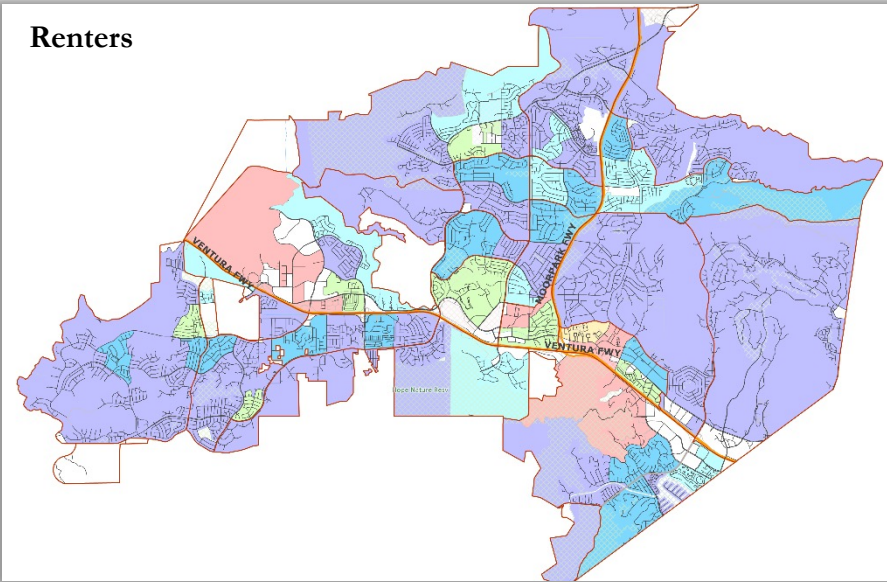
Household income  
over \$75,000 per year



Child at Home



Renters



# Defining Neighborhoods

---

**1<sup>st</sup> Question: What is your neighborhood?**

**2<sup>nd</sup> Question: What are its geographic boundaries?**

**Examples of physical features defining a neighborhood boundary:**

- ❑ Natural neighborhood dividing lines, such as highway or major roads, rivers, canals and/or hills
- ❑ Areas around parks or schools
- ❑ Other neighborhood landmarks

**In the absence of public testimony, planning records and other similar documents may provide definition.**





# Beyond Neighborhoods: Defining Communities of Interest

---

## 1<sup>st</sup> Question: What defines your community?

- ❑ Geographic Area, plus
- ❑ Shared issue or characteristic
  - ❑ Shared social or economic interest
  - ❑ Impacted by city policies
- ❑ Tell us “your community’s story”

## 2<sup>nd</sup> Question: Would this community benefit from being “included within a single district for purposes of its effective and fair representation”?

- ❑ Or would it benefit more from having multiple representatives?

Definitions of Communities of Interest may not include relationships with political parties, incumbents, or political candidates.

# Input So Far

- From the May 9<sup>th</sup> Hearing and May 10<sup>th</sup> Community Forum:
  - ▣ A number of comments regarding various neighborhoods and communities:
    - Freeway corridors
    - School attendance areas
    - Downtown (Moorpark to 101 to Janss Marketplace)
    - Encino Vista
    - Westlake Village-adjacent

# Public Mapping and Map Review Tools

---

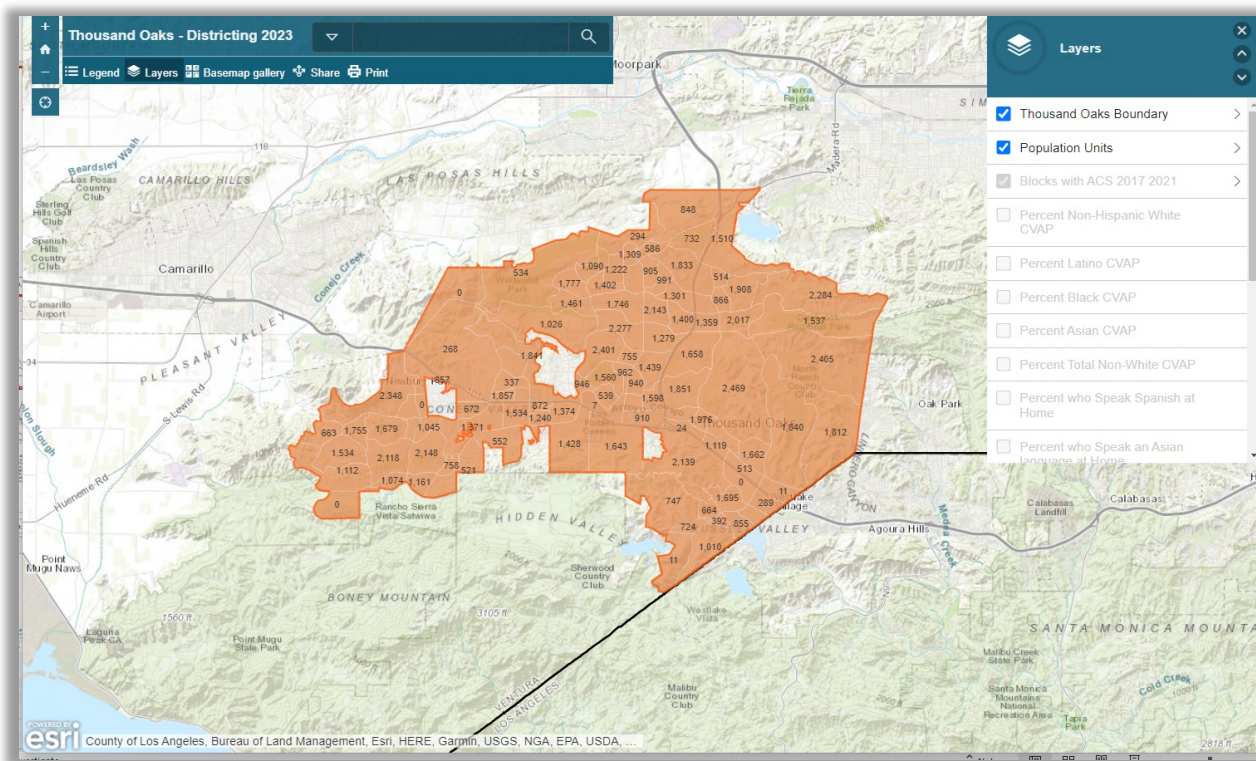
- ❑ Different tools for different purposes
- ❑ Different tools for different levels of technical skill and interest
  - ❑ Simple “review draft maps” tool
  - ❑ Paper-based simple “Draw a draft map” tools
  - ❑ Powerful, data-rich “Draw a draft map” online tool

Whether you use the online mapping tool, the paper kit, or just draw on a napkin, we welcome your maps!

# Simple Map Viewing Tool

Very similar to Google Maps:

- ❑ Zoom in and out, or enter an address to see which district it is in
- ❑ Choose which overlays you wish to view (if any)



# Simple Map Drawing Tool

## Paper “Public Participation Kit”

- ❑ For those without internet access or who prefer paper
- ❑ Total Population Counts only – no demographic numbers

### Thousand Oaks Districting 2023

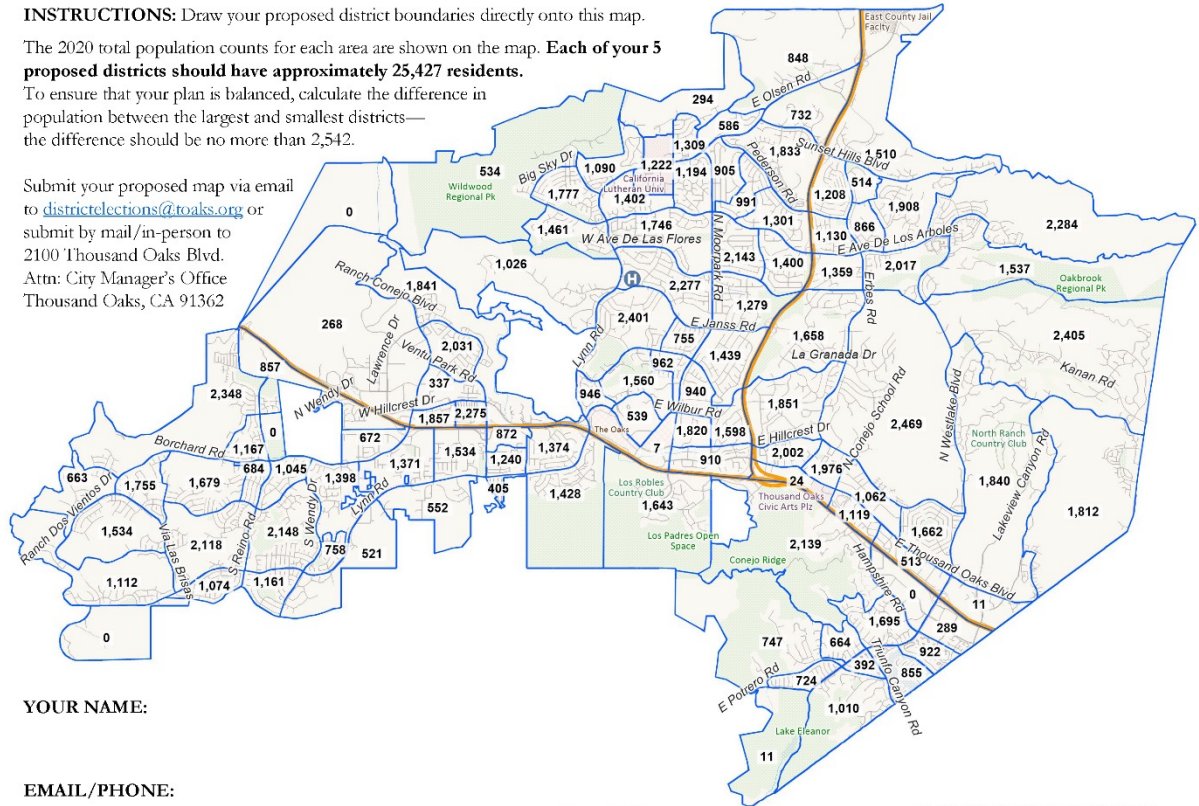
### Public Participation Kit

**INSTRUCTIONS:** Draw your proposed district boundaries directly onto this map.

The 2020 total population counts for each area are shown on the map. **Each of your 5 proposed districts should have approximately 25,427 residents.**

To ensure that your plan is balanced, calculate the difference in population between the largest and smallest districts—the difference should be no more than 2,542.

Submit your proposed map via email to [districtelections@toaks.org](mailto:districtelections@toaks.org) or submit by mail/in-person to 2100 Thousand Oaks Blvd. Attn: City Manager's Office Thousand Oaks, CA 91362

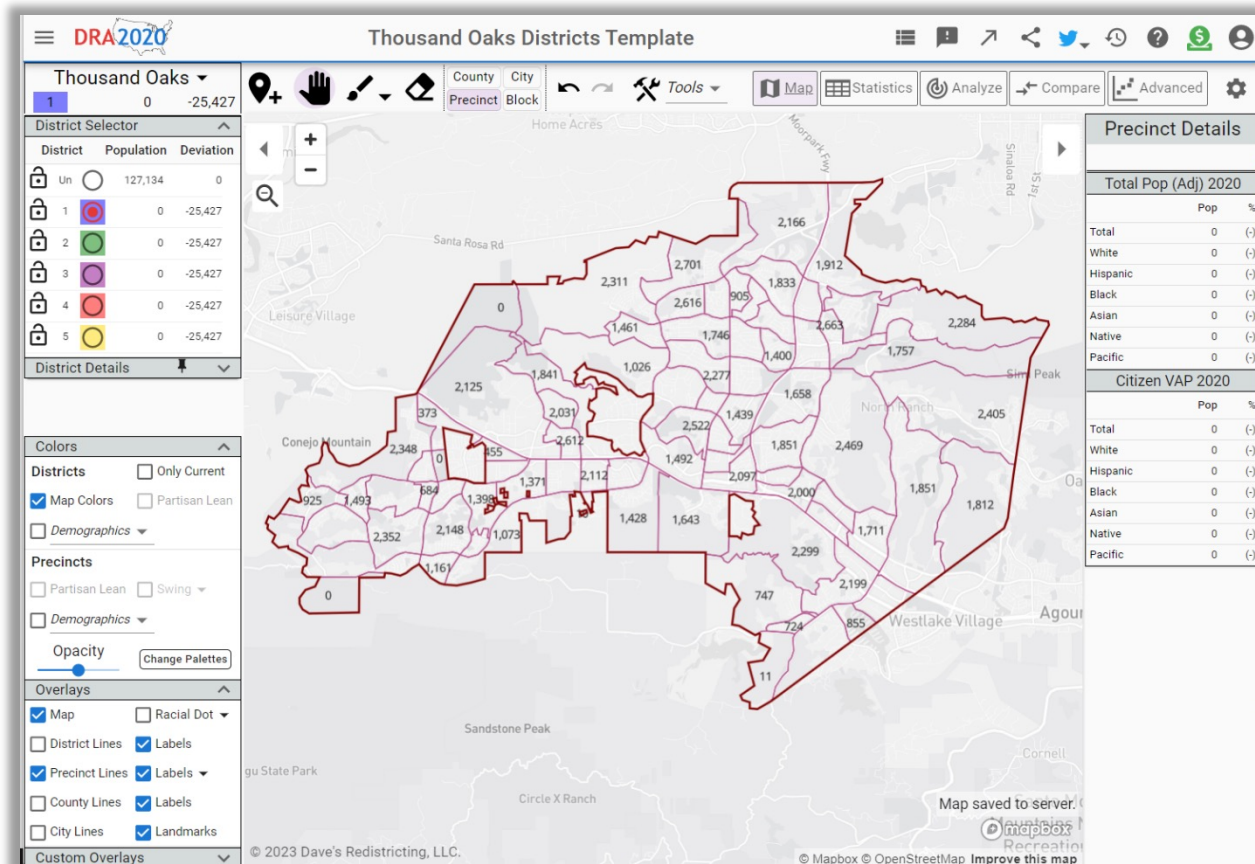




# Dave's Redistricting App (DRA)

## Draw Your Community of Interest or a Full District Map

- Also includes simple district-mapping tool
- Email a link to your map to the City



# Public Hearing & Discussion

---

- ❑ What is your neighborhood or community of interest and what are its boundaries?
- ❑ What other notable areas are in the City, and what are their boundaries?
- ❑ Any questions about the mapping tools?

# Share Your Thoughts



## Communities of Interest Survey

**Name** *(Required)*

First

Last

**Email** *(Required)*

**Are you a resident of the City of Thousand Oaks?** *(Required)*

- ☐ Yes
- ☐ No
- ☐ Other

Other

**Where is your community located?**

You can define it by neighborhood, streets, address, proximity to a key landmark (such as a school or community center), or other boundaries.

Fill out the survey: [MapTOaks.org/Survey](https://MapTOaks.org/Survey)

# Share Your Thoughts

---

Website

[mapTOaks.org](http://mapTOaks.org)

Phone

805-449-2170

Email

[districtelections@toaks.org](mailto:districtelections@toaks.org)