

# Thousand Oaks Districting Public Hearing

July 11, 2023

Kristen Parks, Consultant  
National Demographics Corporation

# Districting Process

Step	Description
<b>Two Initial Hearings</b> May 9 & May 16	Held prior to release of draft maps. Education and to solicit input on the composition of districts.
<b>Community Workshops</b> May 11 & June 3	Forums for public input and education on the process and mapping tools.
<b>Hearing on draft maps</b> June 20	1 <sup>st</sup> public hearing on draft maps. Map revisions and selection of focus maps.
<b>Community Workshops</b> June 22 & 24	Opportunities for residents to discuss and share opinions on the initial draft maps.
<b>Hearing and Selection of Preferred Map</b> July 11	2 <sup>nd</sup> public hearing on draft maps. Selection of map and election sequence. Introduction of adoption ordinance.
<b>Map adoption</b> July 18	Map adopted via ordinance. Final map must be posted at least 7 days prior to adoption.



# Districting Rules and Goals

## 1. Federal Laws

**Equal Population**  
**Federal Voting Rights Act**  
**No Racial Gerrymandering**



## 2. California Criteria for Cities

1. **Geographically contiguous**
2. **Undivided neighborhoods and “communities of interest”**  
(Socio-economic geographic areas that should be kept together)
3. **Easily identifiable boundaries**
4. **Compact**  
(Do not bypass one group of people to get to a more distant group of people)

### **Prohibited:**

“Shall not favor or discriminate against a political party.”

## 3. Other Traditional Districting Principles

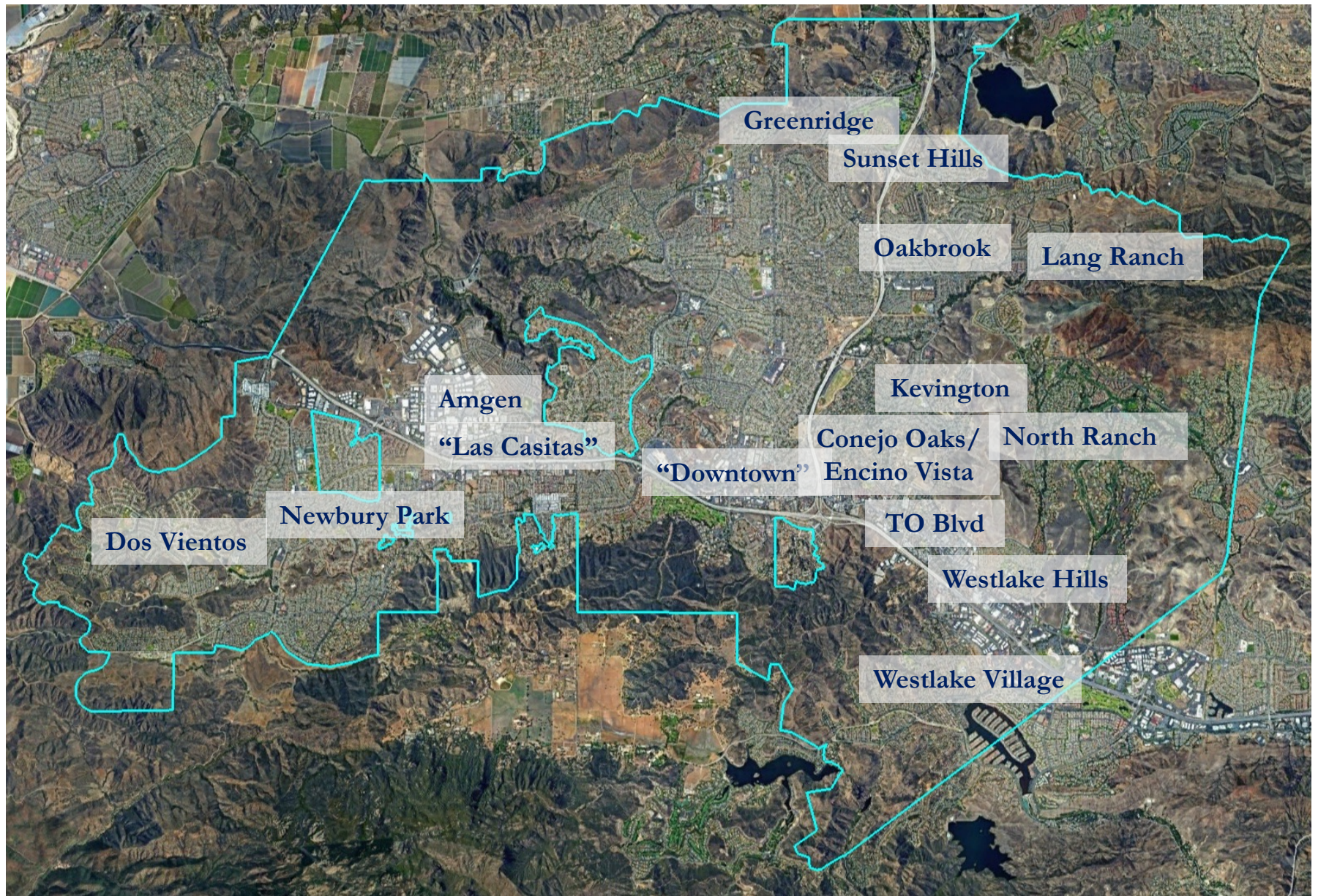
**Respect voters’ choices / continuity in office**  
**Future population growth**

# Community of Interest Input

Public input from Community Forums, web survey, and written correspondence:

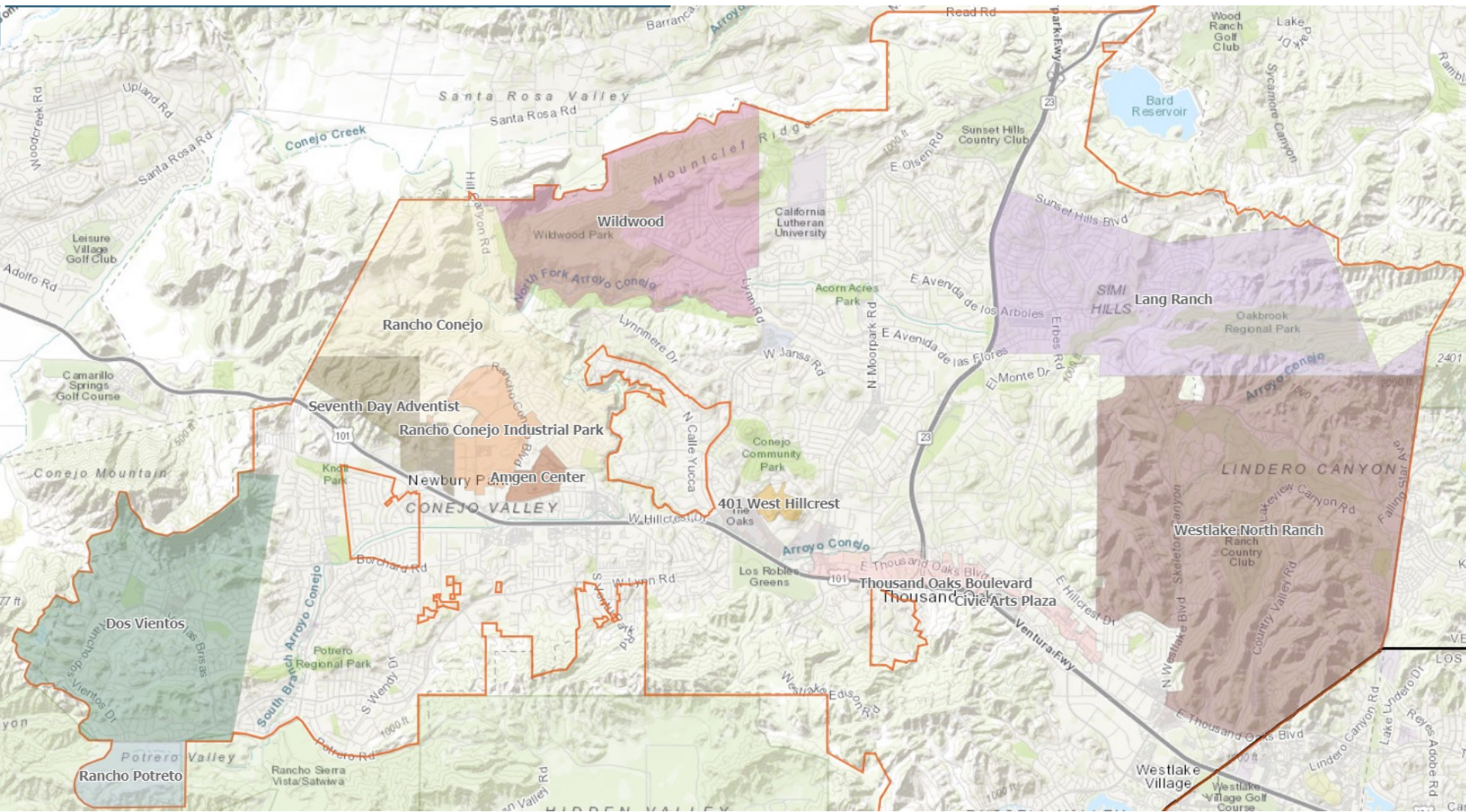
- ▣ Freeway corridors
- ▣ Newbury Park
- ▣ Amgen/East Newbury Park
- ▣ Dos Vientos
- ▣ Las Casitas
- ▣ Downtown (Moorpark to 101 to Janss Marketplace)
- ▣ TO Blvd corridor
- ▣ Encino Vista
- ▣ Westlake Hills
- ▣ Westlake Village-adjacent
- ▣ Upper and lower Erbes Rd
- ▣ Greenridge
- ▣ Sunset Hills
- ▣ Lang Ranch
- ▣ Oakbrook
- ▣ Kevington





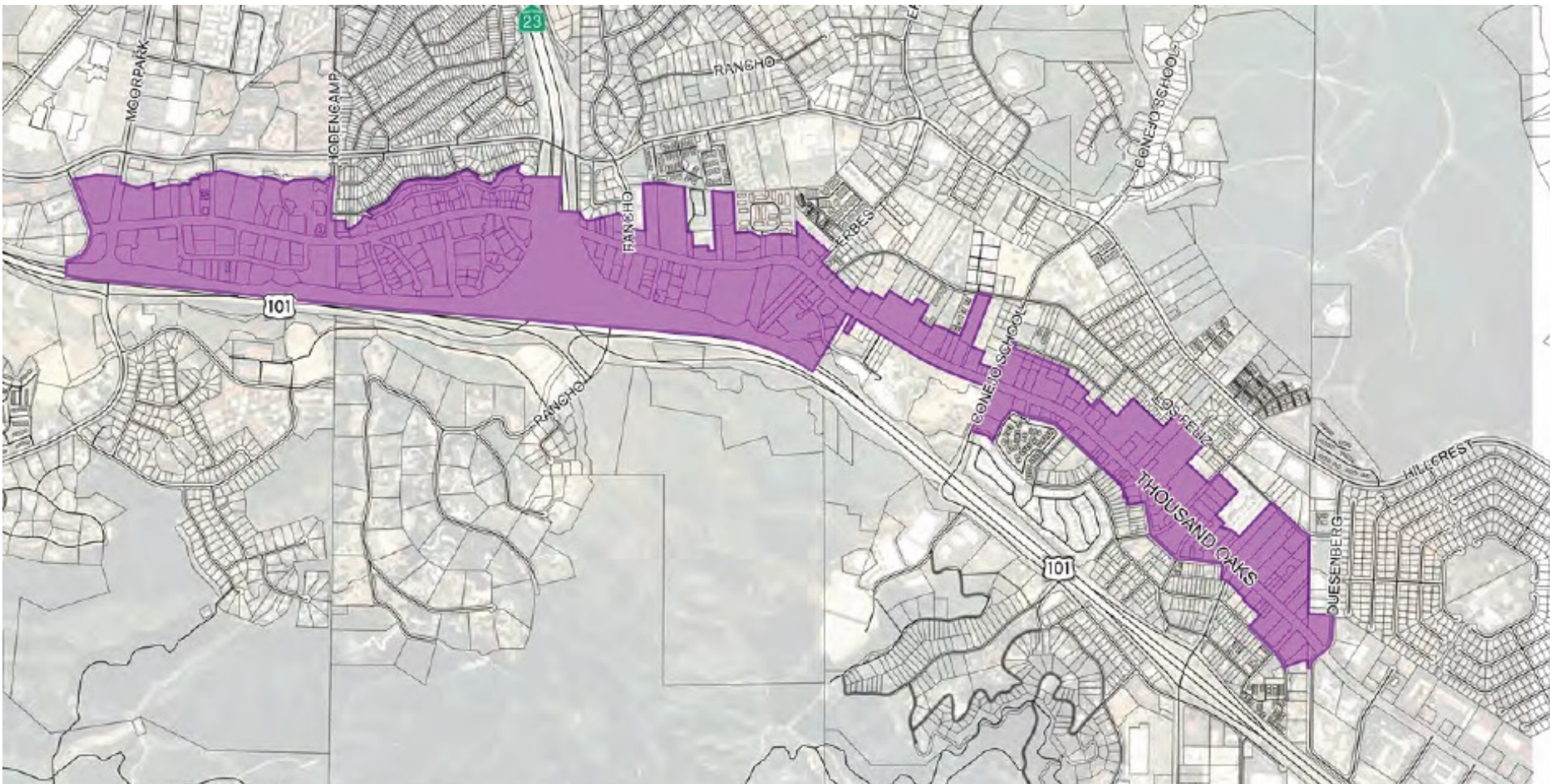


# Specific Plan Areas

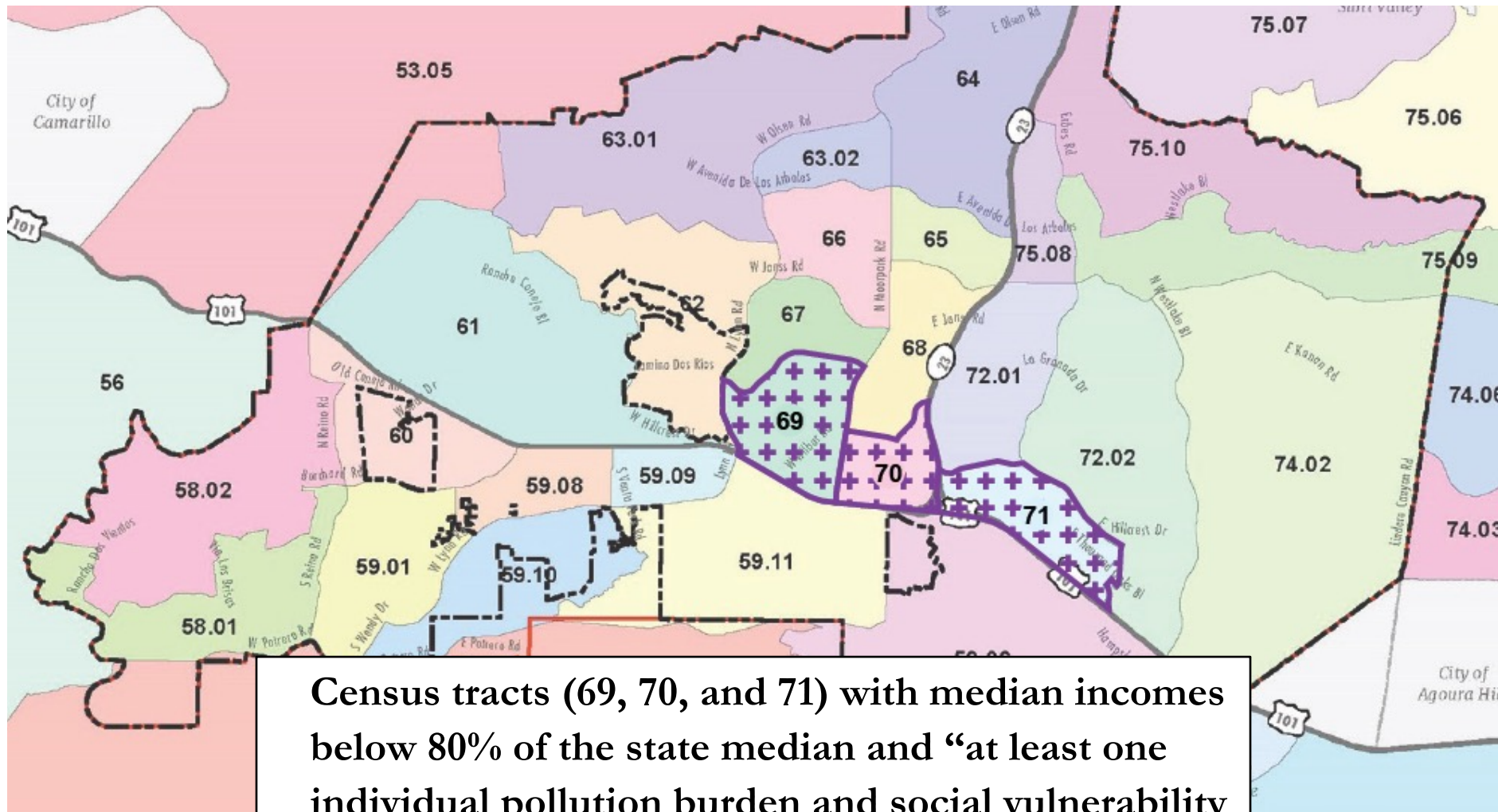




# “TO Blvd” Specific Plan Area



# Disadvantaged Communities



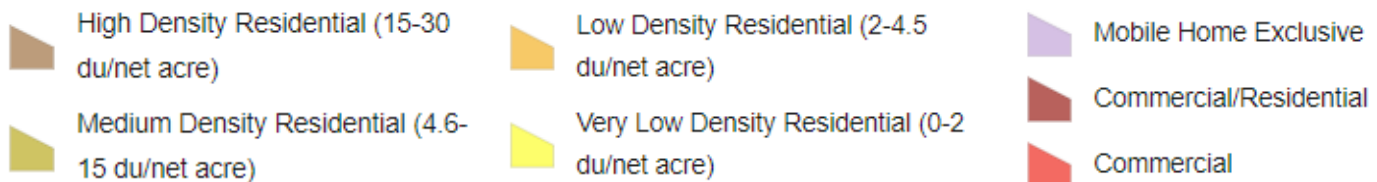
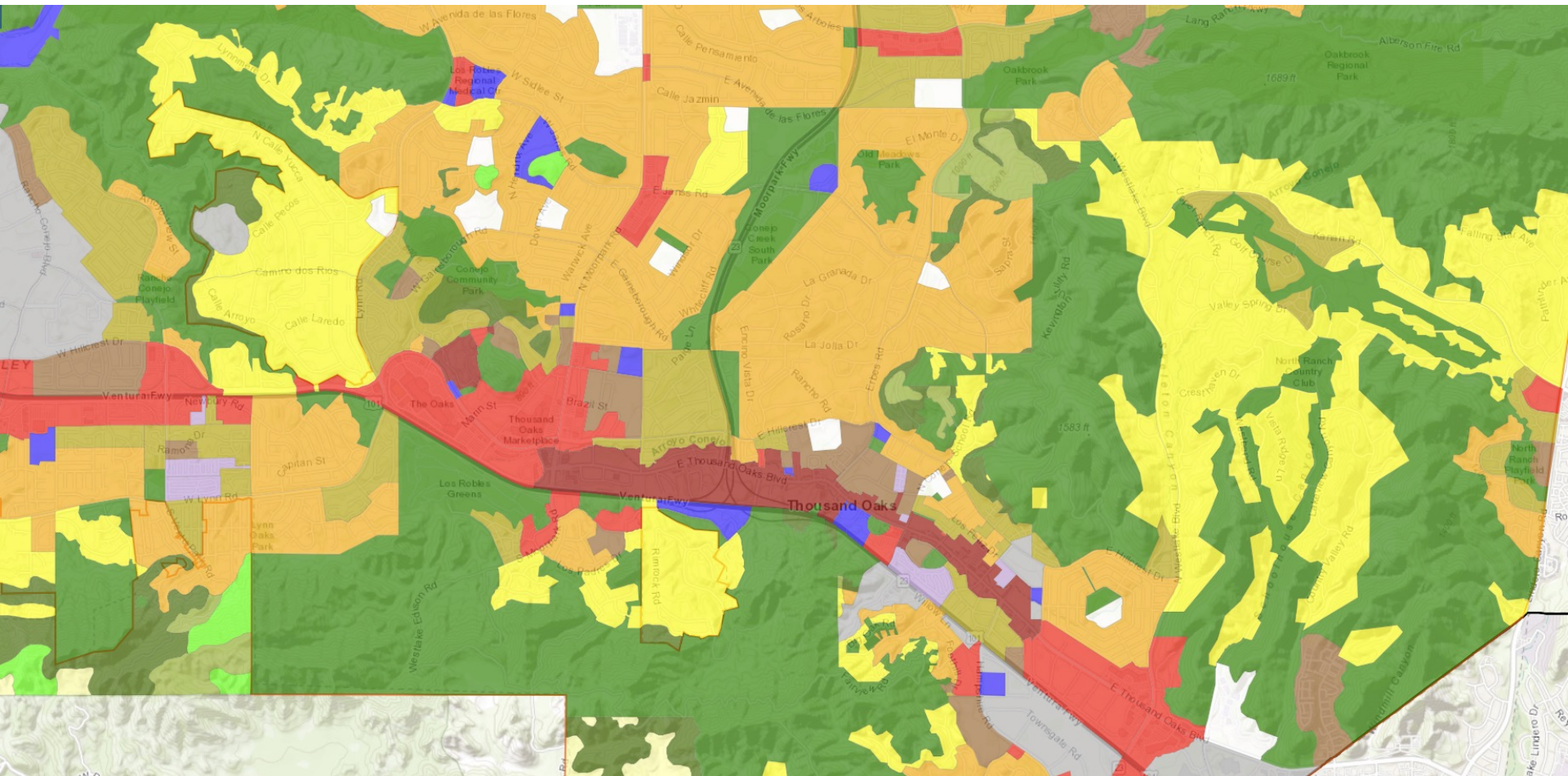
Census tracts (69, 70, and 71) with median incomes below 80% of the state median and “at least one individual pollution burden and social vulnerability indicator”



Disadvantaged Communities



# Current Land Use



# Draft Maps Overview

## Draft Maps

- 16 public map submissions (Map 101 through Map 116)
- NDC added three maps (Green, Orange and Yellow)

## June 20<sup>th</sup> Public Hearing

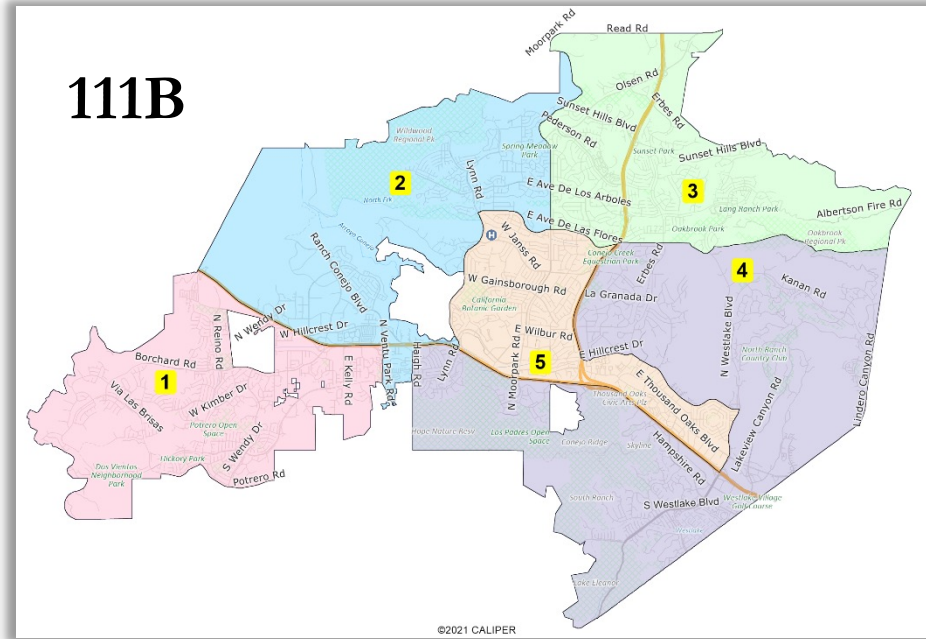
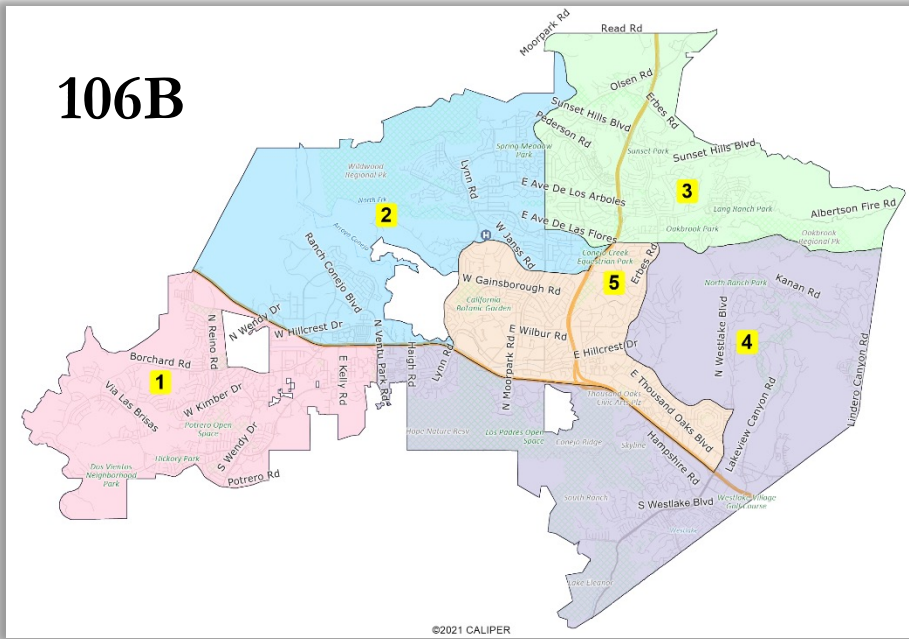
- 10 contiguous, population-balanced maps presented
- Council requested revisions to Maps 106 & 111 → Maps 106B & 111B
- Map 104, Map 106B, and Map 111B identified as “Focus Maps”

## Tonight's Public Hearing

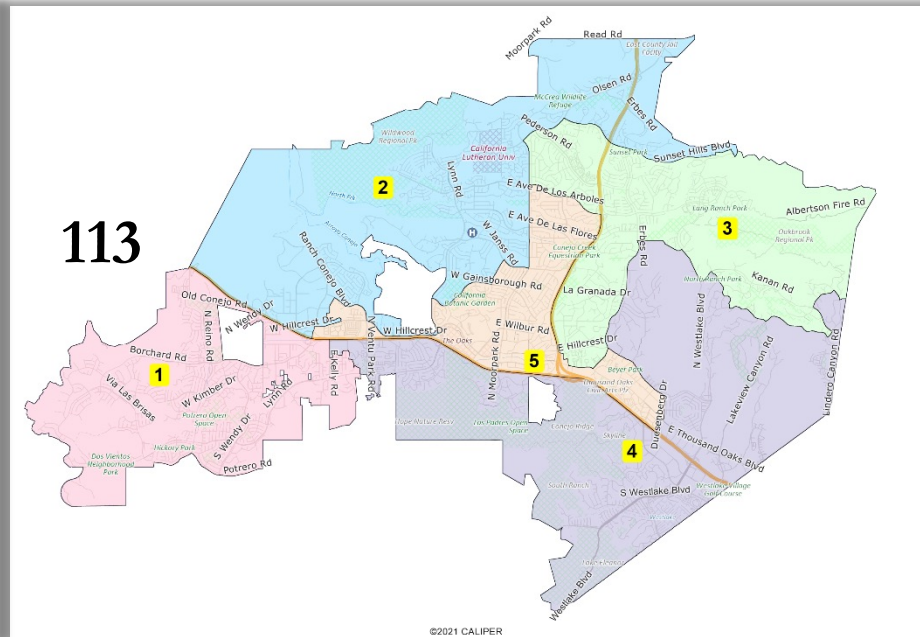
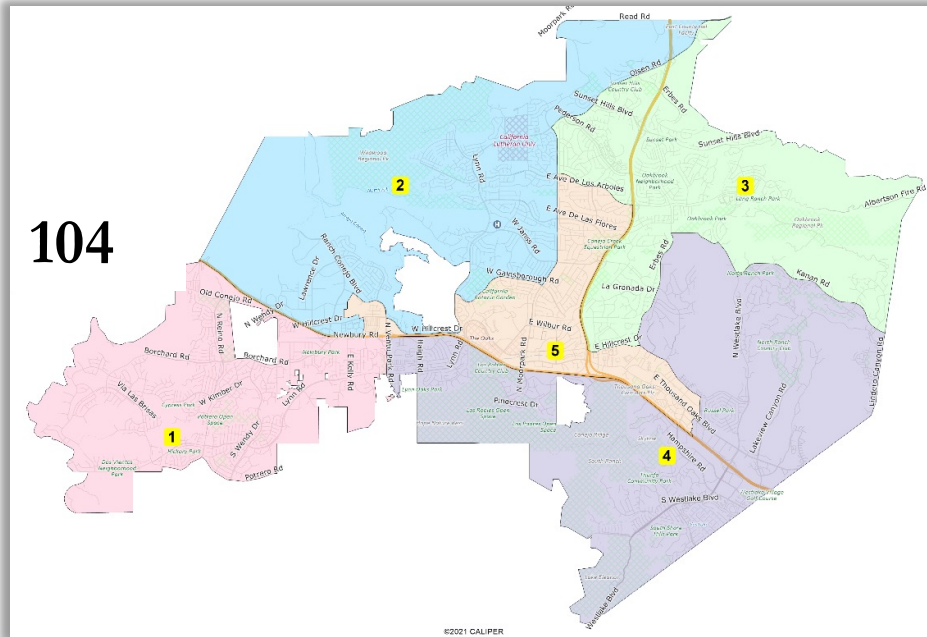
- Focus Maps 104, 106B, and 111B
- 5 **new** contiguous, population-balanced public map submissions (Map 112 through Map 116)
- **Tonight's goal: Select a preferred map and election sequence**



# Focus Maps 106B and 111B



# Focus Map 104 and New Map 113

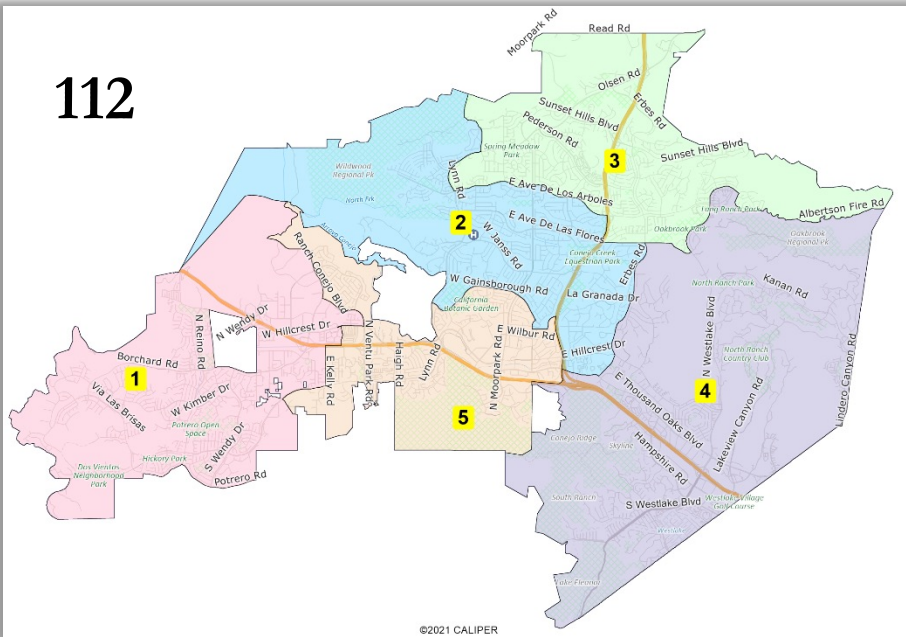


Potential racial gerrymandering concern needs to be addressed.



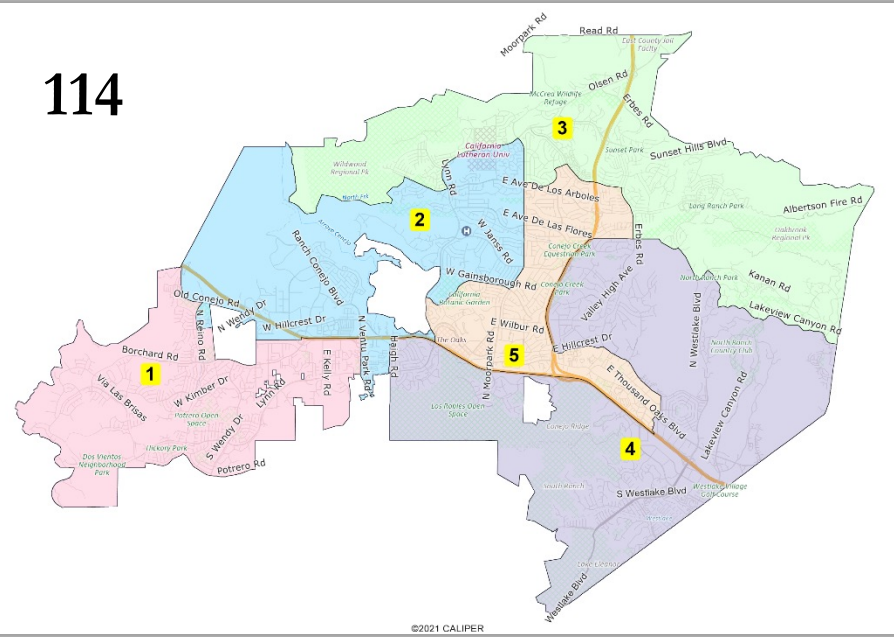
# New Maps 112 and 114

112



Compactness concern needs to be addressed with a higher-ranked FAIR MAPS Act explanation.

114



Compactness concern needs to be addressed with a higher-ranked FAIR MAPS Act explanation.

## 115





# Public Hearing and Discussion

Goal for tonight:

- ❑ Selection of preferred map and election sequence

